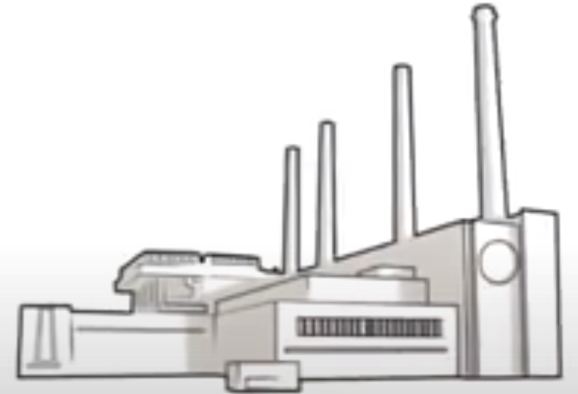
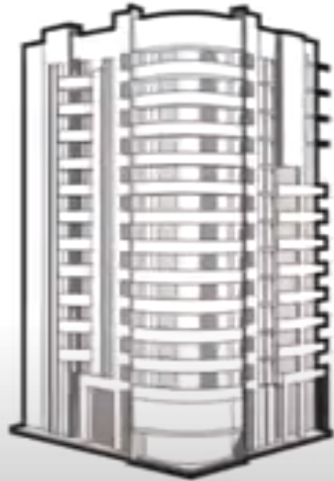
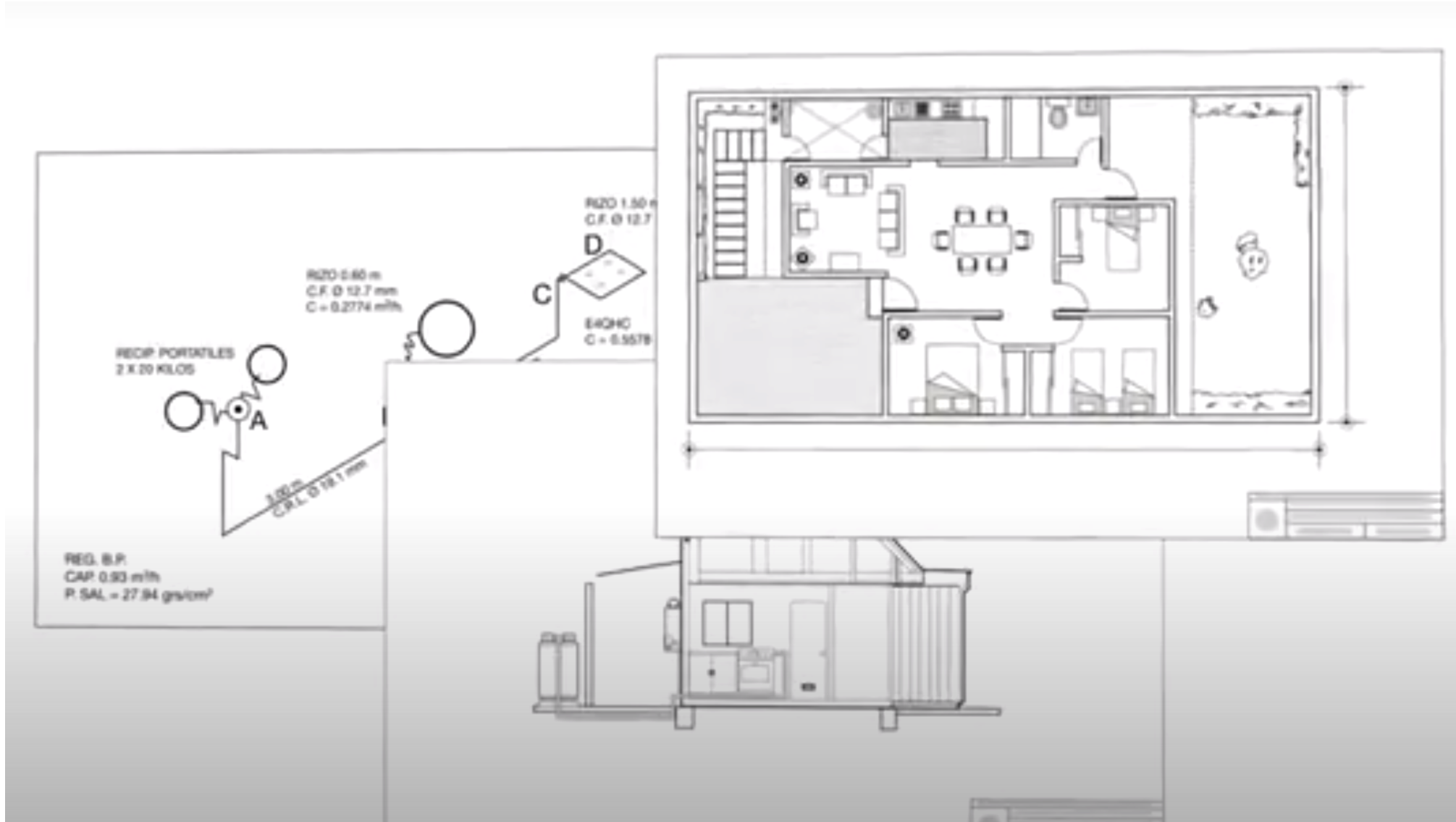
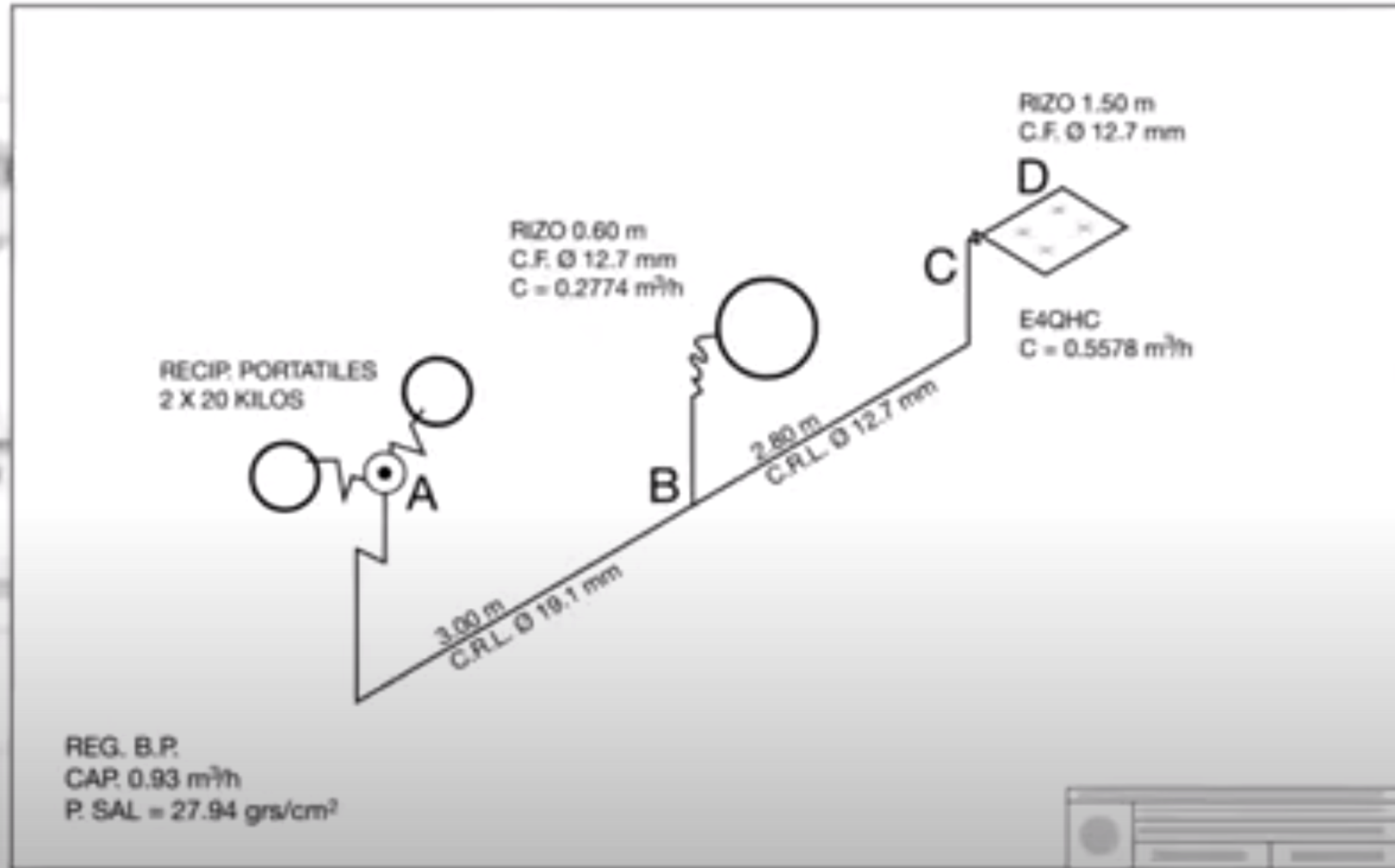


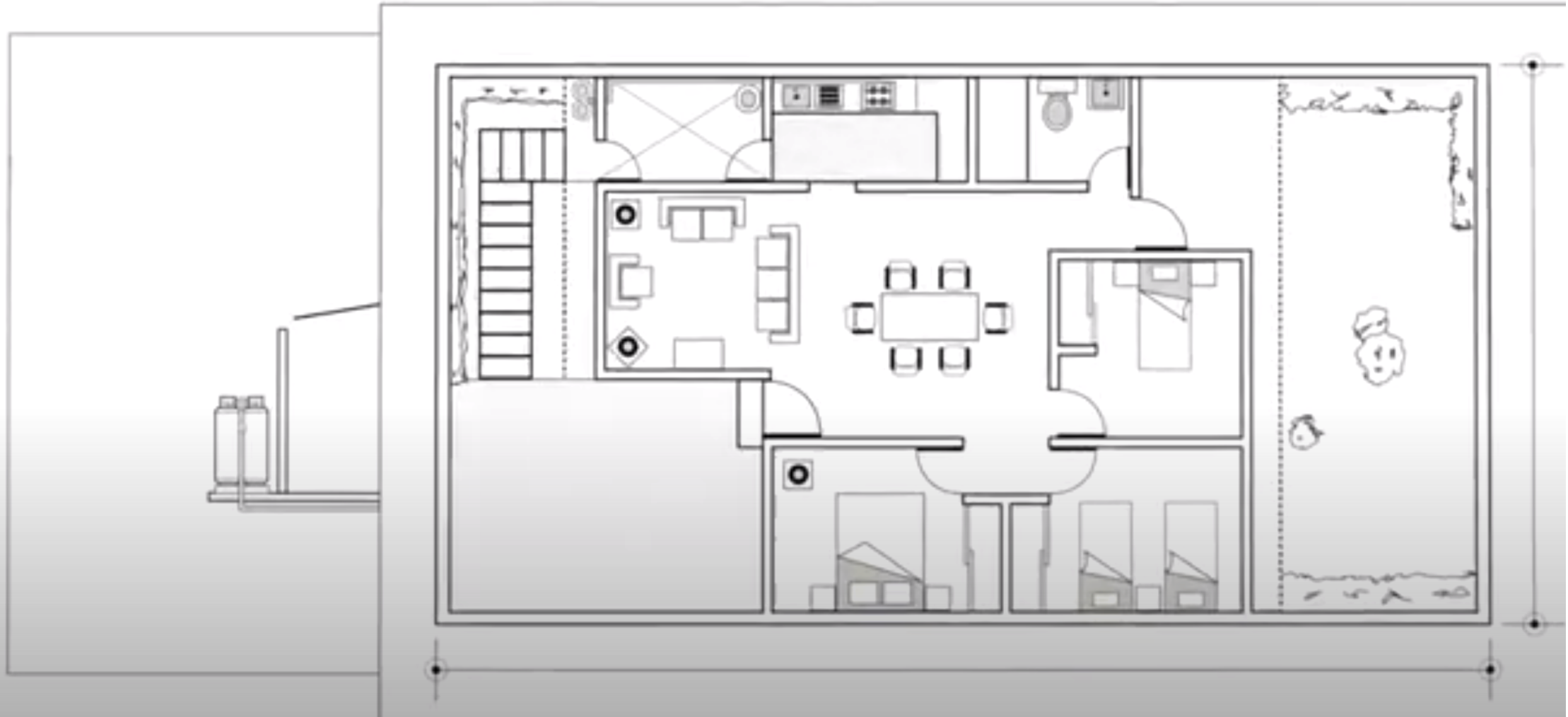
INTERPRETACIÓN DE PLANOS DE INSTALACIONES DE GAS



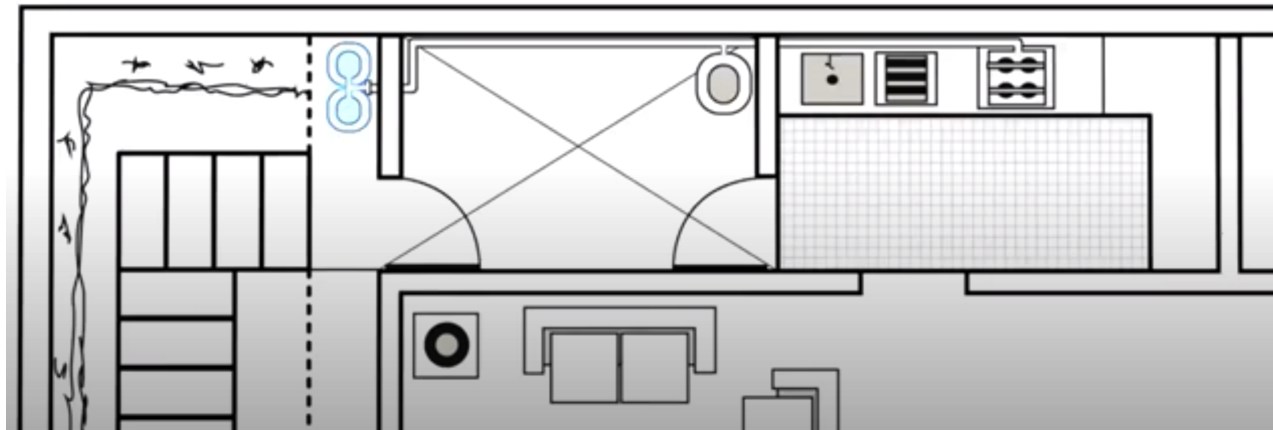




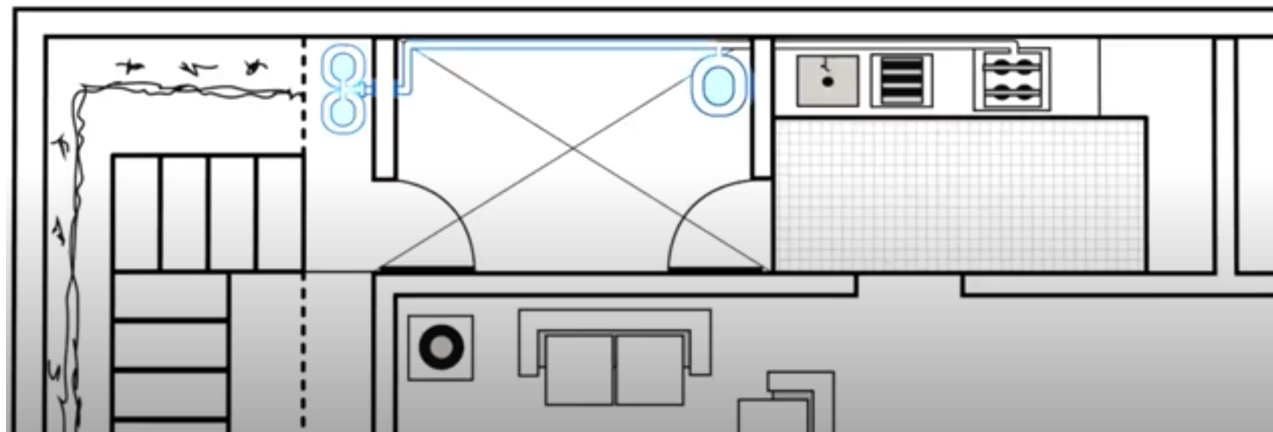




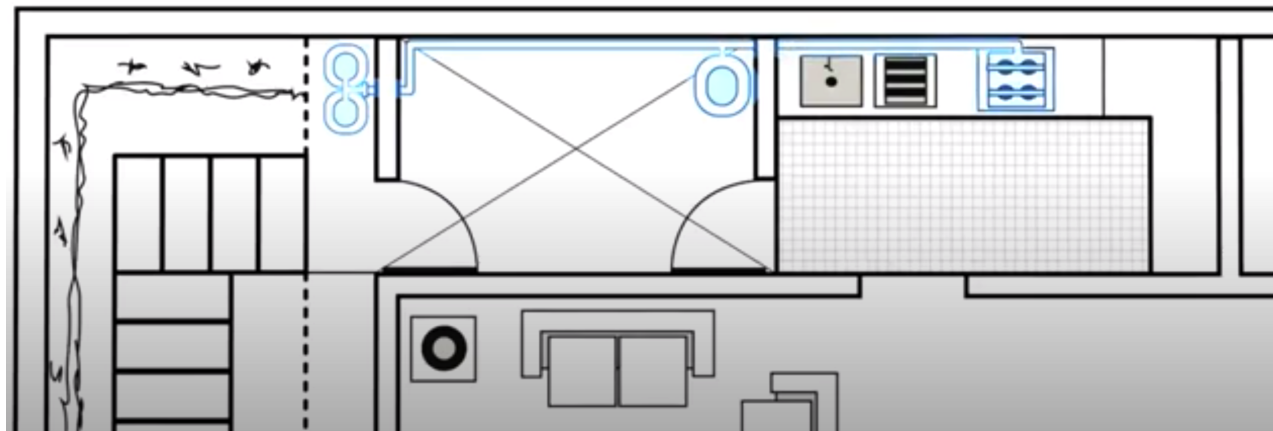
DOS TANQUES PORTATILES O CILINDROS
UBICADOS EN EL PATIO DE LA FACHADA
PRINCIPAL



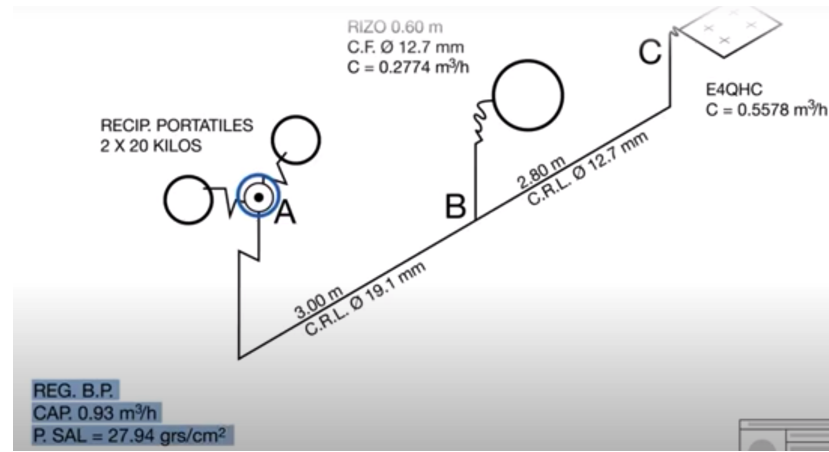
EL CALENTADOR QUE ESTA UBICADO EN EL
PATIO DE SERVICIO



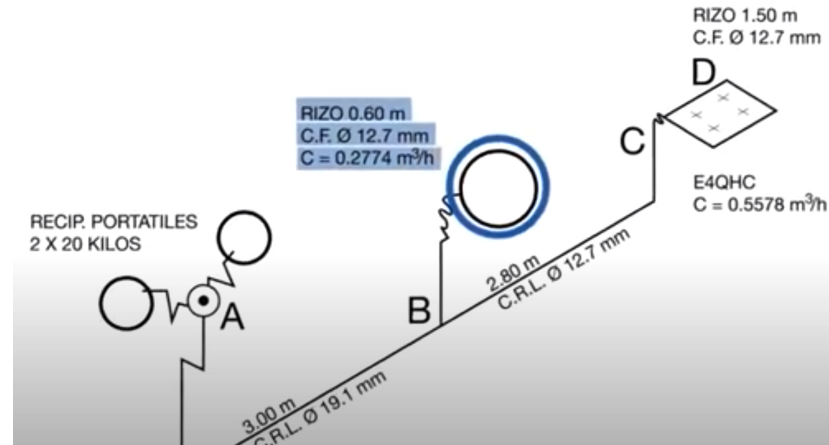
LA ESTUFA QUE ES DE CUATRO QUEMADORES
EN LA COCINA



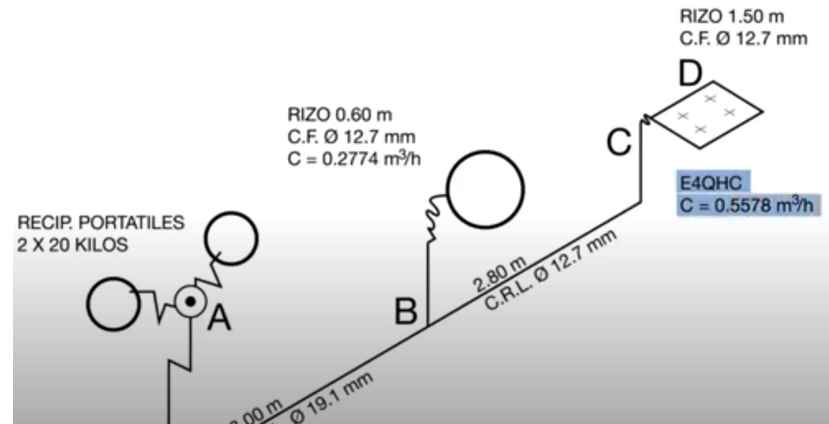
DOS CILINDROS DE GAS DE 20 KG



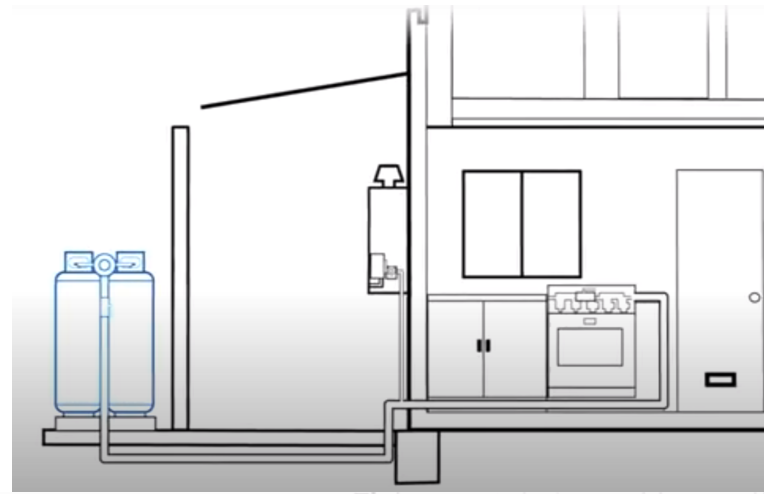
UN CALENTADOR DE PASO



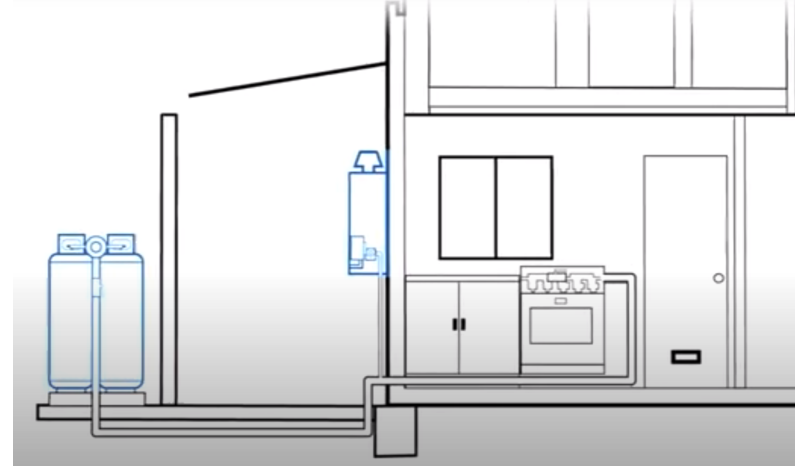
UNA ESTUFA DE 4 QUEMADORES HORNO Y COMAL



DOS CILINDROS DE GAS DE 20 KG



UN CALENTADOR DE PASO



UNA ESTUFA DE 4 QUEMADORES HORNO Y
COMAL

